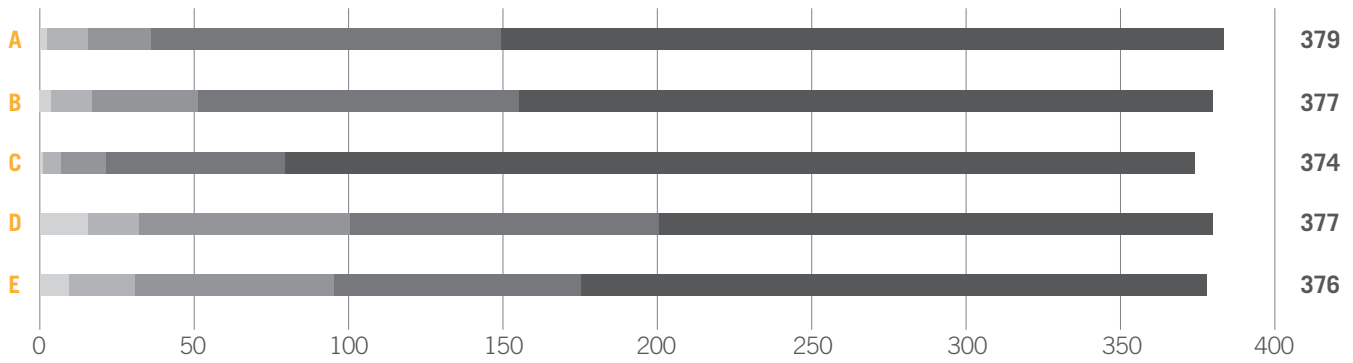


C2030 POST SURVEY

Here are a few key things that attendees felt were important for the future of Perth.

How much do you agree or disagree with each of these?



A There needs to be a shared vision for Perth that we are all working towards

B There needs to be more areas in Perth that families or young people can enjoy spending time in

C Perth should be designed to fully embrace sustainability in the future

D Indigenous culture in Western Australia should be celebrated

E Perth needs to become a city that says "Yes"

Agree totally

Agree somewhat

Neither agree or disagree

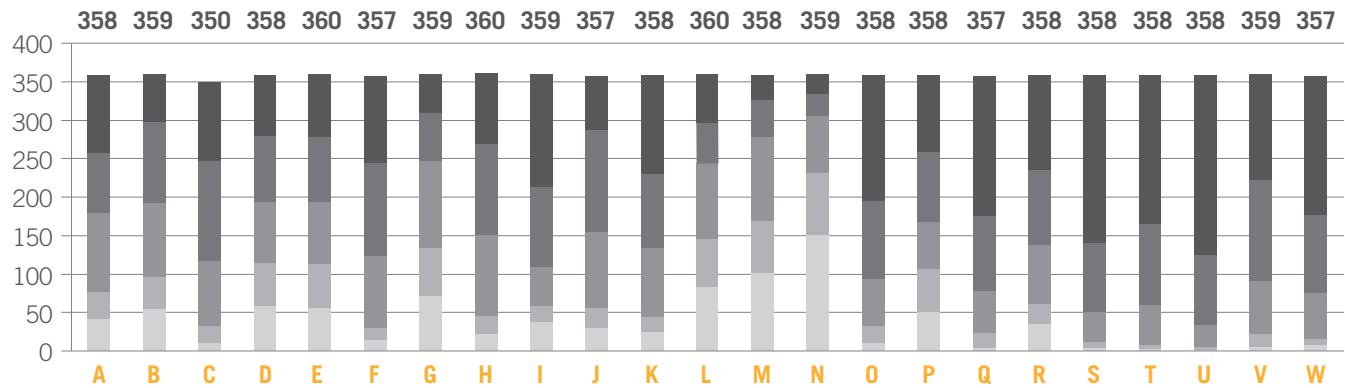
Disagree somewhat






Disagree totally

C2030 POST SURVEY

A lot of ideas were generated during the Summit and we want to know what you think about each of them.

How much would you support each of these.



- | | | | |
|----------|---|---|---------------------------|
| A | Develop a university campus in the Perth CBD |  | 1 - Support totally |
| B | Paint the city with Indigenous art eg freeway overpasses and footpaths |  | 2 |
| C | Co-locate a cross section of age groups in new developments |  | 3 |
| D | Create an aquatic playground on the Swan River featuring waterslides |  | 4 |
| E | Commission an iconic water feature on the Swan River |  | 5 - Do not support at all |
| F | Turn schools into community hubs | | |
| G | Mandate corporate casual wear; particularly in summer | | |
| H | Paint Perth taxis so that they are unique to our WA | | |
| I | Link Kings Park to the city by cable car or monorail | | |
| J | Establish creative youth programs at the railway station | | |
| K | Construct a light rail between Subiaco and Scarborough | | |
| L | Paint the Perth Convention and Exhibition Centre to look like a gum leaf from King's Park | | |
| M | Turn parking inspectors into "Meter People" a la the Gold Coast in the 1970's | | |
| N | Create two avenues of light in the city to be visible from space | | |
| O | Create a World Centre for Sustainability and Resources | | |
| P | Encourage developments around beachfronts | | |
| Q | Create a World Centre of Renewable Energy | | |
| R | Implement mandatory community service as part of high school | | |
| S | Integrate city with Northbridge | | |
| T | Create community gardens | | |
| U | Create better connections between the suburbs and the city | | |
| V | Connect children and older people through partnerships between schools and retirement homes | | |
| W | Capitalise on Perth as the city centre of the Indian Ocean | | |